



Schedule 5

Design Drawings

Note: These designs drawings are intent only and the finished building may vary somewhat from what is currently being proposed.

View of the front of the SAMU Building from 104 Ave and 109 St



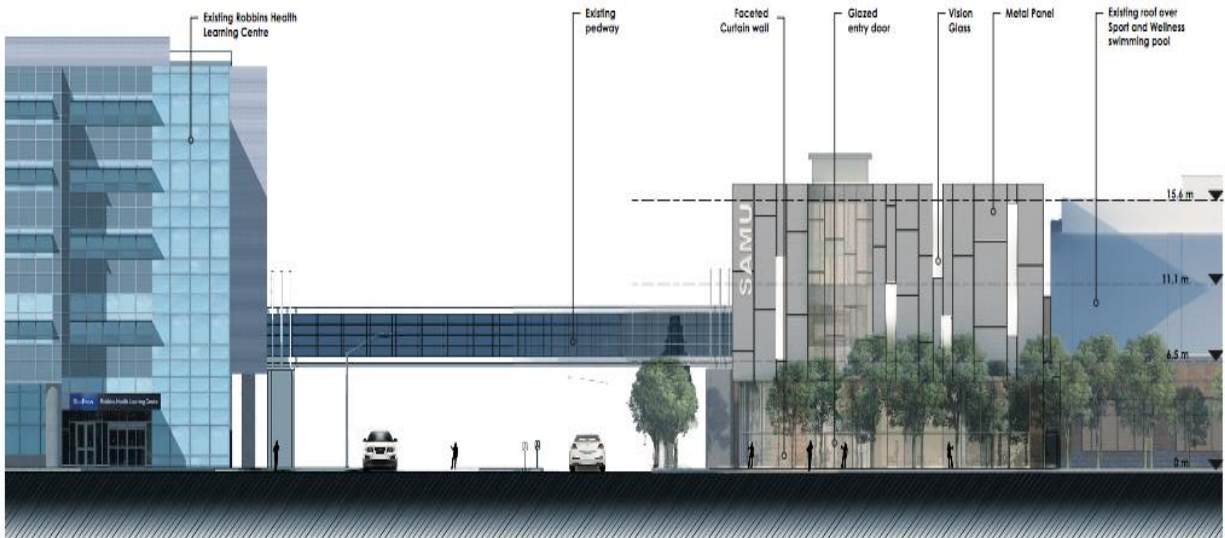
View of side and some front from 104 Ave and 109 St



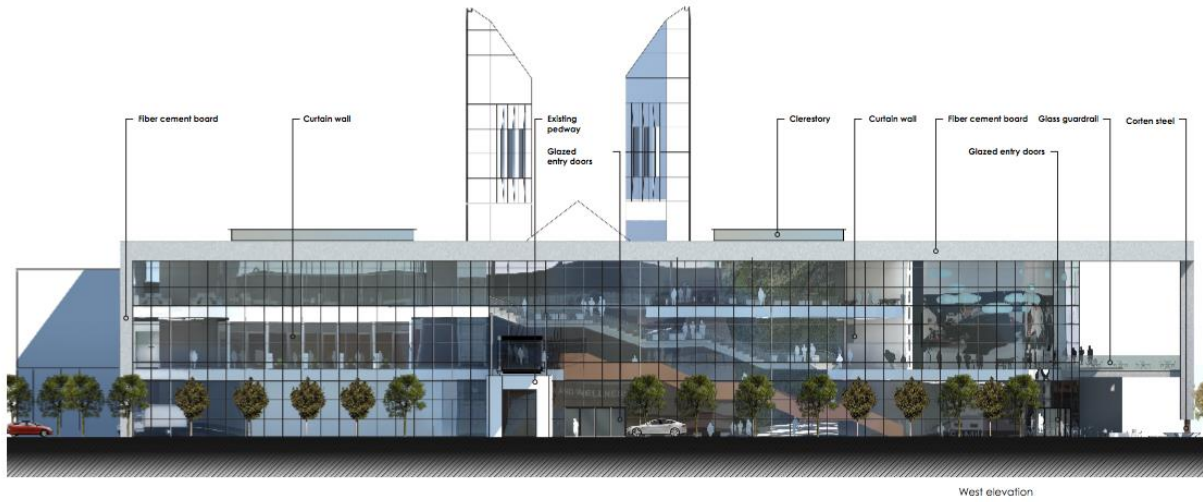
View of close up front from 104 Ave and 109 St



View facing North In front of the SAMU Building and Robbins Health and Learning Building on the left



View of SAMU building from the 109 St facing east



View of interior main floor entering from 104 Ave



View of cut out from 109 St showing retail bays on second floor and living wall in building



INTERIOR ELEVATION LOOKING EAST AT LIVING WALL